



# PRODUCTGUIDE

ISS31:SEP24



## HOCHIKI OFFICES AROUND THE WORLD

(from West to East)

### HOCHIKI AMERICA CORPORATION

E: [sales@hochiki.com](mailto:sales@hochiki.com)  
[www.hochiki.com](http://www.hochiki.com)

### HOCHIKI MEXICO

E: [jbravo@hochiki.com](mailto:jbravo@hochiki.com)  
[www.hochikiamerica.com](http://www.hochikiamerica.com)

### HOCHIKI EUROPE (UK) LTD

E: [info@hochikieurope.com](mailto:info@hochikieurope.com)  
[www.hochikieurope.com](http://www.hochikieurope.com)

### HOCHIKI ITALIA

E: [info@hochiki.it](mailto:info@hochiki.it)  
[www.hochiki.it](http://www.hochiki.it)

### HOCHIKI MIDDLE EAST FZE

E: [sales@hochiki.ae](mailto:sales@hochiki.ae)  
[www.hochiki.ae](http://www.hochiki.ae)

### HOCHIKI EUROPE - INDIA BRANCH OFFICE

E: [info@hochiki.in](mailto:info@hochiki.in)  
[www.hochikieurope.com/india](http://www.hochikieurope.com/india)

### HOCHIKI ASIA PACIFIC

E: [sales@hochikiasiapacific.com](mailto:sales@hochikiasiapacific.com)  
[www.hochikiasiapacific.com](http://www.hochikiasiapacific.com)

### HOCHIKI CORPORATION - TAIWAN BRANCH OFFICE

E: [htro@hochiki.com.tw](mailto:htro@hochiki.com.tw)  
[www.hochiki.com.tw](http://www.hochiki.com.tw)

### HOCHIKI CORPORATION

E: [overseas@hochiki.co.jp](mailto:overseas@hochiki.co.jp)  
[www.hochiki.co.jp](http://www.hochiki.co.jp)

### HOCHIKI AUSTRALIA

E: [sales@hochikiaustralia.com](mailto:sales@hochikiaustralia.com)  
[www.hochikiaustralia.com](http://www.hochikiaustralia.com)



Hochiki Offices

# World Class Leaders in Fire Detection Since 1918

## Introduction

Hochiki has a distinguished heritage of specialist technological expertise which has gained the group its international status as one of the world's leading manufacturers of commercial and industrial fire detection solutions. Established early in the twentieth century, Hochiki has remained an independent, multi-national company which now employs over 2000 personnel in total, operating six manufacturing plants, thirty-eight sales offices and fourteen subsidiaries.

Hochiki Europe (UK) Ltd manufactures and distributes product for Europe, the Middle East, CIS, Indian Sub-Continent and Africa and is dedicated to providing sales and technical services to these markets.

## World Proven Performance

With a heritage of innovative design and leading edge technologies, Hochiki's products have gained widespread acceptance as the benchmark for high-integrity and long-term reliability throughout the world.

## Research and Development for Life Safety

Hochiki owns the world's largest, purpose-built, state of the art fire test laboratory. This ensures that the pedigree of Hochiki products remains unrivalled and guarantees that even large scale designs are fully proven in real fire conditions.

In addition, the Group employs over 100 specialist research and development engineers that undertake activities from fundamental research into the physical properties of fire, to hardware and software product design and development.

## Delivery Quality

Acknowledged globally by system specifiers and integrators as an international market leader in the manufacture of fire products, the main benefits of using Hochiki devices are:

- ▶ High quality of products ensure long term reliability
- ▶ Easy to install
- ▶ Open Protocol for choice and flexibility
- ▶ Reduced cost of ownership
- ▶ Virtual elimination of false alarms
- ▶ Compliance to standards

## Types of Fire Detection System

Hochiki offers many types of fire detection system; this includes the ESP intelligent analogue addressable fire alarm system, the CDX conventional system and Ekho, a hybrid wireless system. These ranges are supplemented by a large selection of ancillary and test equipment.

## Product Colour Key

Some products are available in a range of colours, and where appropriate, a colour swatch is shown next to these products denoting which colours are available.

For example  denotes product available in ivory.


Ivory  White  Black  Grey  Red  Blue  Green  Yellow

## Useful Contact Information

Hochiki Europe (UK) Limited  
Grosvenor Road  
Gillingham Business Park  
Gillingham  
Kent  
ME8 0SA  
United Kingdom

 [www.hochikieurope.com](http://www.hochikieurope.com)

 [facebook.com/hochikieurope](https://facebook.com/hochikieurope)

 [youtube.com/user/hochikieurope](https://youtube.com/user/hochikieurope)

## Useful Phone Numbers

**Main switchboard:**

 +44 (0)1634 260133

**UK Customer Services/Orders:**

 +44 (0) 1634 266 517

 +44 (0) 1634 266 522

 +44 (0) 1634 266 541

 +44 (0) 1634 266 561

**Export Customer Services/Orders:**

 +44 (0) 1634 266 545

 +44 (0) 1634 266 557

 +44 (0) 1634 266 594

## Useful Email Addresses

**For general, non-sales-related queries:**

[info@hochikieurope.com](mailto:info@hochikieurope.com)

**For UK sales enquiries:**

[sales@hochikieurope.com](mailto:sales@hochikieurope.com)

**For Non-UK sales enquiries:**

[export@hochikieurope.com](mailto:export@hochikieurope.com)

**For product support issues:**

[psupport@hochikieurope.com](mailto:psupport@hochikieurope.com)

**For web site queries/problems:**

[web@hochikieurope.com](mailto:web@hochikieurope.com)

**For career vacancy enquiries:**

[recruit@hochikieurope.com](mailto:recruit@hochikieurope.com)



Intelligent

### Addressable Fire Detection

Sensors	7
Bases	9
Beams	9
Audio/Visual	9
Modules	12
Manual Call Points	14



Conventional

### Fire Detection

Detectors	17
Beam Detectors	19
Bases	19
Audio/Visual	21
Manual Call Points	24



Linear Heat Detection Cable

Interfaces	27
Cables	27



Hybrid Wireless

### Fire Detection

Ekho Translator & Expander	29
Ekho Sensors	30
Ekho Audio/Visual	30
Ekho Modules	31
Ekho Manual Call Points	31



High Sensitivity  
Smoke Detection

FIRElink Detectors	35
FIRElink Accessories	36



### Equipment

Ancillaries	38
Test Equipment	39
Power Supplies	41
Enclosures	41



### Guides to our EN54-23 A/V Range

Sounder Beacons	44
Conventional Beacons	45
Ceiling Beacons	46
Wall Beacons	47



## Addressable Fire Detection

Hochiki's comprehensive ESP intelligent (Analogue Addressable range) is suitable for even the most demanding environments and incorporates high performance sensors, a wide selection of input and output modules and ancillaries. All products use Hochiki's high integrity digital communications link 'ESP' (Enhanced Systems Protocol) that's at the heart of the ESP range.

[www.hochikieurope.com/esp](http://www.hochikieurope.com/esp)





### ALN-EN

An Intelligent Photoelectric Smoke Sensor incorporating Hochiki's unique High Performance Chamber which allows the sensor threshold level to be increased, thereby improving the signal to noise ratio and reducing susceptibility to false alarms.

- ▶ Removable, High Performance Chamber
- ▶ Twin fire LEDs allow 360° viewing
- ▶ Locking mechanism (sensor to base)
- ▶ Variable sensitivity
- ▶ Electronically addressed
- ▶ Pulsing/non-pulsing controlled from panel\*
- ▶ Addressed via TCH-B200 Hand Held Programmer
- ▶ Approved by LPCB & VdS
- ▶ Marine-Approved, Railway-Approved and SIL2 Capable variants available



### ACC-EN

An Intelligent Multi Sensor incorporating a thermal element and a High Performance photoelectric smoke chamber. Has three modes controlled from the Control Panel, allowing either the optical or thermal element or both to be active in making the fire decision.

- ▶ User selectable modes
- ▶ Incorporates Optical & Heat elements
- ▶ Removable, High Performance Chamber
- ▶ Twin fire LEDs allow 360° viewing
- ▶ Pulsing/non-pulsing controlled from panel\*
- ▶ Variable sensitivity
- ▶ Electronically addressed
- ▶ Addressed via TCH-B200 Hand Held Programmer
- ▶ Approved by LPCB & VdS
- ▶ Marine-Approved, Railway-Approved and SIL2 Capable variants available



### ATJ-EN

An Intelligent Multi-Heat Sensor incorporating a variable Fixed Temperature heat element and Rate Of Rise heat element, both controlled from the Control Panel allowing either thermal element or both elements simultaneously to be active in making the fire decision.

- ▶ User selectable modes
- ▶ Incorporates Fixed Temperature and Rate Of Rise Heat elements
- ▶ Twin fire LEDs allow 360° viewing
- ▶ Pulsing/non-pulsing controlled from panel\*
- ▶ Electronically addressed
- ▶ Addressed via TCH-B200 Hand Held Programmer
- ▶ LPCB & VdS approved to Classes A, B & C
- ▶ Approved by LPCB & VdS
- ▶ Marine-Approved and SIL2 Capable variants available



### ACD-EN\*

Addressable Multi Sensor with CO detection  
An addressable loop-powered multi-sensor, with smoke, heat and CO sensing elements. The unit offers 24 different modes of operation\* and seamlessly matches the other sensors in the ESP Range. The CO sensing element can be used to detect smoke as well as life-threatening CO levels (acting as a CO alarm).

- ▶ User selectable modes
- ▶ Low profile
- ▶ Twin fire LEDs allow 360° viewing
- ▶ Multiple modes
- ▶ Heat, Optical and CO sensing elements
- ▶ CO Alarm (COHb) facility
- ▶ Programmable fire threshold level
- ▶ RI & LED controllable separately if required
- ▶ 2 colour LED (Polling: Green, Fire: RED)
- ▶ Addressed via TCH-B200 Hand Held Programmer.
- ▶ LPCB approved
- ▶ Designed for up to 10 year's CO cell life\*
- ▶ Fully monitored CO cell including end of life warning on the panel
- ▶ 3 year warranty period.

\*Dependent on environmental conditions and in accordance with our installation guidelines.



## ALN-EN(SCI)

An Intelligent Photoelectric Smoke Sensor with SCI incorporating Hochiki's newest High Performance Chamber Technology removing the need to use Ionisation Smoke Sensors in the majority of applications. This also allows the sensor threshold level to be increased, thereby improving the signal to noise ratio and reducing susceptibility to false alarms.

- ▶ Removable, High Performance Chamber
- ▶ Twin LEDs allow 360° viewing – green when polling, amber when isolating, red in fire
- ▶ Locking mechanism (sensor to base)
- ▶ Variable sensitivity
- ▶ Pulsing/non-pulsing controlled from panel\*
- ▶ Electronically addressed via TCH-B200 Hand Held Programmer.
- ▶ Approved by LPCB & VdS



## ACC-EN(SCI)

An Intelligent Multi Sensor with SCI which is fully compatible with Hochiki's ESP Analogue Addressable Protocol, and incorporates a thermal element and a High Performance photoelectric smoke chamber.

The ACC-EN(SCI) has three modes, which are controlled from the Control Panel, allowing either the optical element or thermal element or both elements to be active in making the fire decision\*.

- ▶ User selectable modes
- ▶ Incorporates Optical & Heat elements
- ▶ Removable, High Performance Chamber
- ▶ Pulsing/non-pulsing controlled from panel\*
- ▶ Twin LEDs allow 360° viewing – green when polling, amber when isolating, red in fire
- ▶ Variable sensitivity
- ▶ Electronically addressed via TCH-B200 Hand Held Programmer.
- ▶ Approved by LPCB & VdS



## ATJ-EN(SCI)

An Intelligent Multi-Heat Sensor with SCI which is fully compatible with Hochiki's ESP Analogue Addressable Protocol.

The ATJ-EN(SCI) incorporates a Variable Temperature heat element and a Rate of Rise heat element, both of which are controlled from the Control Panel, allowing either thermal element or both elements simultaneously to be active in making the fire decision.

- ▶ User selectable modes
- ▶ Incorporates Fixed Temperature and Rate of Rise Heat elements
- ▶ Twin LEDs allow 360° viewing – green when polling, amber when isolating, red in fire
- ▶ Pulsing/non-pulsing controlled from panel\*
- ▶ Electronically addressed via TCH-B200 Hand Held Programmer.
- ▶ Approved by LPCB & VdS



## YBV-R/4

SCI Sensor Mounting Base which is fully compatible with Hochiki's ESP range of SCI sensors. It is supplied with square cable clamps for secure and reliable cable termination and is also capable of driving a remote LED if required.

- ▶ Electronics free
- ▶ Stainless steel contacts
- ▶ Takes 2.5 mm<sup>2</sup> cables
- ▶ Slim profile - only 8 mm
- ▶ Rugged wiring contacts
- ▶ Facility for remote indicator
- ▶ Quick Connection via square cable clamps
- ▶ Fourth terminal enables SCI functionality.





### ACB-EW

An Intelligent IP67 Rated Waterproof Multi-Heat Sensor which can be used externally and is supplied with its own fixing base which is used to fix the sensor. Flying leads from the sensor connect directly to the loop via waterproof connectors.

- ▶ User selectable modes
- ▶ Incorporates Fixed Temperature and Rate Of Rise Heat elements
- ▶ Twin fire LEDs allow 360° viewing
- ▶ Pulsing/non-pulsing controlled from panel\*
- ▶ IP67 rated
- ▶ Supplied with fixing base
- ▶ Electronically addressed via TCH-B200 Hand Held Programmer & PL-2
- ▶ Approved by LPCB & VdS to Classes A, B & C



### YBN-R/3

A Common Mounting Base which is fully compatible with Hochiki's ESP range of sensors. Supplied with square cable clamps for secure and reliable cable termination and is also capable of driving a remote LED if required.

(Red version for Sounders available - see below)

- ▶ Electronics free
- ▶ Stainless steel contacts
- ▶ Takes 2.5mm<sup>2</sup> cables
- ▶ Slim profile - only 8mm
- ▶ Rugged wiring contacts
- ▶ Facility for remote indicator
- ▶ Quick Connection via square cable clamps
- ▶ Sounder version available in either red or white for use with CHQ-WS2 Wall Sounders or CHQ-WSB2 Wall Sounder Beacons - YBO-R/3 and YBO-R/3(WHT).



### ESP FIREbeam Xtra

An intelligent reflective Beam Smoke Detector fully approved to EN 54-12:2015 which can offer a maximum detection range of 160 m. The unit's newly designed optics increase sensitivity whilst the enhanced internal software reduces false alarms.

- ▶ 7 – 70 m standard detection range
- ▶ Extensions kits available to enhance detection range up to 160 m
- ▶ Continually corrects itself against building movement
- ▶ Brand new optics design reduces false alarms
- ▶ Fully compatible with the Hochiki ESP analogue addressable protocol.
- ▶ Approved by VdS to EN 54-12:2015

\*Please ensure control panel compatibility.



### CHQ-WS2

An Intelligent Loop-Powered Wall Sounder providing 8 volume levels and 51 tones with a maximum output of up to 102 dB(A) ( $\pm 2$  dB(A)) with low current consumption.

- ▶ Loop Powered
- ▶ Single Loop Address - addressed via the TCH-B200 Hand Held Programmer
- ▶ Variable Sound Output 90 ~ 102 dB(A) ( $\pm 2$  dB(A)) output at 1 metre
- ▶ Weatherproof Kit available
- ▶ Auto-shutdown Mode available\*
- ▶ 51 User-Selectable Tones (all tones EN54-3 compatible).
- ▶ SIL2 Capable variant available
- ▶ Approved by LPCB, VdS

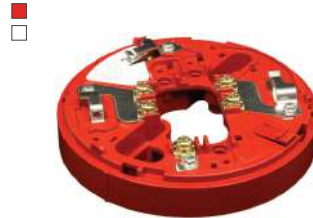


### CHQ-WSB2<sup>2</sup>

An Intelligent Loop-Powered Wall Sounder Beacon as per the CHQ-WS2 but additionally featuring an integral beacon within the horn which utilises high intensity LED technology.

As per CHQ-WS2 plus:

- ▶ Variable flash frequency\*<sup>1</sup>
- ▶ High Intensity LED technology
- ▶ Independent control of Sounder and Beacon\*<sup>1</sup>
- ▶ Auto-shutdown Mode available - can be set independently for sounder or beacon\*<sup>1</sup>
- ▶ Approved to EN54-23: 2010 - Category 'O'
- ▶ Addressed via TCH-B200 Hand Held Programmer.



### YBO-R/3

Sounder Mounting Base, is fully compatible with Hochiki's ESP range of sensors and designed specifically for the Hochiki range of wall sounders, the CHQ-WS2 Wall Sounder and the CHQ-WSB2 Wall

Sounder Beacon. It is supplied with square cable clamps for secure and reliable cable termination.

- ▶ Electronics free
- ▶ Stainless steel contacts
- ▶ Takes 2.5 mm<sup>2</sup> cables
- ▶ Slim profile - only 13 mm
- ▶ Rugged wiring contacts
- ▶ Quick Connection via square cable clamps
- ▶ Also available in white.



### CHQ-WPK

A weatherproof back box and gasket set for various ESP audio/visual devices.

Compatible bases:

CHQ-WS2 Wall Sounder  
CHQ-WSB2 Wall Sounder Beacon

- ▶ Weatherproof box and gasket
- ▶ Increase IP Rating of audio/visual devices to IP65 (external use)
- ▶ Also available in white
- ▶ Easy to install



### YBO-BS

An Intelligent Loop-Powered Base Sounder providing 13 volume levels and 51 tones with a maximum output of up to 98 dB(A)(±2 dB(A)) with low current consumption.

Compatible bases:

YBN-R/3 or YBN-R/3(SCI) Bases.

- ▶ Loop Powered
- ▶ Single Loop Address - addressed automatically by Control Panel or via the TCH-B200 Hand Held Programmer
- ▶ 50 ~ 98 dB(A) (±2 dB(A)) output at 1m
- ▶ Fits Hochiki Standard or Isolator Base and supports ESP Sensors, Beacons and Remote Indicator
- ▶ Approved by LPCB, VdS & to SIL2
- ▶ 51 User-Selectable Tones (all tones EN54-3 compatible).



### YBO-BSB2<sup>2</sup>

An Intelligent Loop-Powered Base Sounder Beacon providing 13 volume levels and 51 tones with a maximum output of up to 98 dB(A) (±2 dB(A)) with low current consumption.

Compatible bases:

YBN-R/3 or YBN-R/3(SCI) Bases.

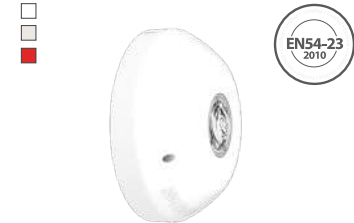
- ▶ Loop Powered
- ▶ Single Loop Address, addressed by either Control Panel or TCH-B200
- ▶ 50 ~ 98 dB(A) (±2 dB(A)) output at 1m
- ▶ Fits Hochiki Standard or Isolator Base and supports ESP Sensors, Beacons and Remote Indicator
- ▶ Beacon and Sounder can be controlled independently\*1
- ▶ Approved to EN54-23: 2010 - Category 'O'
- ▶ 51 User-Selectable Tones (all tones EN54-3 compatible).



### CHQ-CB<sup>2</sup>

An Intelligent Loop-Powered Ceiling Beacon with a high-intensity LED and a custom designed free-form optic which produce a highly visible flash. Variants available in 5m, 7.5m, 10m and 15m area coverage.

- ▶ High Intensity LED technology
- ▶ 0.5/1 Hz flash frequency
- ▶ Addressable via TCH-B200
- ▶ Choice of 2 LED colours (red and white)
- ▶ Approved to EN54-23: 2010 - Category 'C'
- ▶ High efficiency
- ▶ Selectable light output\*1
- ▶ Operating Voltage 17-41 VDC.



### CHQ-WB<sup>2</sup>

An Intelligent Loop-Powered Wall Beacon with a high intensity LED and a custom designed free-form optic which produces a highly visible flash. Variants available in 5m, 7.5m and 10m area coverage.

Compatible bases:

YBN-R/3, YBN-R/3(SCI), YBO-BS or the YBO-R/(SCI).

- ▶ High Intensity LED technology
- ▶ 0.5/1 Hz flash frequency
- ▶ Addressable via TCH-B200
- ▶ Choice of 2 LED colours (red and white)
- ▶ Approved to EN54-23: 2010 - Category 'W'
- ▶ High efficiency
- ▶ Selectable light output\*1
- ▶ Operating Voltage 17-41 VDC.

\*1Please ensure control panel compatibility. \*2For product variants, see pages 44 to 47.



### CHQ-ARI

An Intelligent Loop-Powered Remote Indicator, with high-intensity LEDs and a Fresnel lens design which produces a highly visible signal. The casing exactly matches the Hochiki ESP Sensor range in shape and colour providing seamless integration.

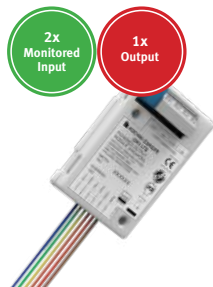
- ▶ High Intensity LED technology
- ▶ Addressable via TCH-B200
- ▶ Non EN54-23 Compliant.



### CHQ-AB

An Intelligent Loop-Powered Visual Indicator with high-intensity LEDs and Fresnel lens design which produces a highly visible flash. The casing exactly matches the Hochiki ESP Sensor range in shape and colour providing seamless integration.

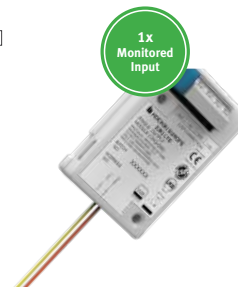
- ▶ High Intensity LED technology
- ▶ 1 Hz flash frequency
- ▶ Addressable via TCH-B200
- ▶ Choice of 3 lens colours (red, amber and blue)
- ▶ Non EN54-23 Compliant



### CHQ-POM

An Intelligent Powered Output Module designed to supply a nominal 24 VDC at various, user-selectable current levels from 2 to 32 mA (in increments of 2 mA). The unit is small enough to be added to other third-party devices thereby allowing a range of equipment to be added to the ESP loop. The unit also features two monitored inputs.

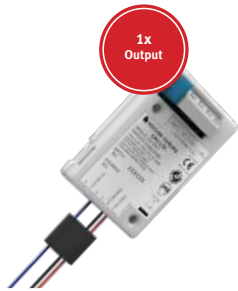
- ▶ Supplies a nominal 24 VDC at various current levels, 2 mA to 32 mA in increments of 2 mA
- ▶ User-selectable current output
- ▶ Includes two monitored inputs
- ▶ Approved by LPCB & VdS
- ▶ Addressed with TCH-B200 Hand Held Programmer & PL-3
- ▶ Colour-coded flying leads for simple installation
- ▶ Small design, provides simple connectivity to ESP loop for third-party devices, such as IFD-E.



### CHQ-SIM

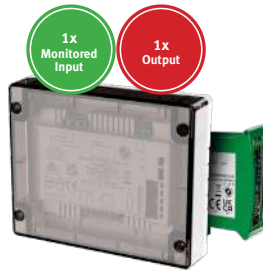
An Intelligent Single Input Module designed to allow a single monitored input to be connected to the ESP loop. This provides a compact, low-cost option where the installation of the larger CHQ 'Smart-Fix' Range of Modules might be difficult.

- ▶ Small design for simple provision of a monitored input onto an ESP loop
- ▶ Flying leads for easy installation
- ▶ Addressed with TCH-B200 Hand Held Programmer & PL-3
- ▶ Approved by LPCB & VdS.



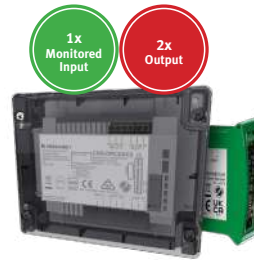
#### Lid Colours

-  Transparent Black
-  Opaque White



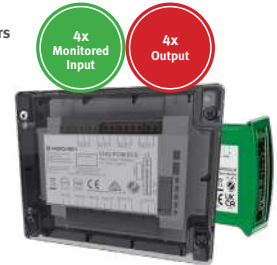
#### Lid Colours

-  Transparent Black
-  Opaque White



#### Lid Colours

-  Transparent Black
-  Opaque White



## CHQ-SOM

An Intelligent Single Output Module designed to allow a single relay output to be connected to the ESP loop. The unit incorporates a volt-free relay contact that can be configured as either N/O or N/C, the relay contact is rated to 30 VDC (max), 1 A (resistive load). The CHQ-SOM features three colour-coded flying leads, the unit also features a wiring terminal block for loop connection.

- ▶ Small design for simple provision of a monitored input onto an ESP loop
- ▶ Flying leads for easy installation
- ▶ Addressed with TCH-B200 Hand Held Programmer & PL-3.
- ▶ Approved by LPCB & VdS

## CHQ-MRC2(SCI)

An Intelligent Mains Relay Controller providing a single mains rated relay output for the control of such devices as dampers, extractors or plant and equipment shut-down. The monitored input can be used for local power supply fault monitoring or as a general-purpose input. Also available as a DIN Rail mountable version. Both models feature an integral short-circuit isolator.

- ▶ 1 x mains out & 1 x input
- ▶ Integral SCI
- ▶ Loop-powered
- ▶ Single loop address
- ▶ DIL switch addressable
- ▶ Single mains rated relay contact
- ▶ Relay contact rated at 250 VAC @ 5A (resistive) & 48 VDC @ 2A (resistive)
- ▶ Auxiliary monitored input
- ▶ Can be used with CHQ-BACKBOX to comply with BS 7671.
- ▶ Both models approved by LPCB & VdS

 CHQ-MRC2/DIN(SCI)

## CHQ-DRC2(SCI)

An Intelligent Dual Relay Controller designed to provide two general-purpose relay outputs, each output can be controlled independently and used to control dampers, plant and equipment shut-down. The monitored input can be used for local power supply fault monitoring or as a general-purpose input. Also available as a DIN Rail mountable version. Both models feature an integral short-circuit isolator.

- ▶ Loop powered
- ▶ Single loop address
- ▶ DIL switch addressable
- ▶ Relays contact rated at 30 VDC at 1 A
- ▶ Auxiliary monitored input
- ▶ Deeper back box available CHQ-BACKBOX
- ▶ Two independently controlled changeover relays
- ▶ Can be used with CHQ-BACKBOX to comply with BS 7671.
- ▶ Both models approved by LPCB & VdS

 CHQ-DRC2/DIN(SCI)

## CHQ-PCM(SCI)

A Plant Control Module with four independent change-over relay outputs, with N/O and N/C volt free contacts and four inputs. These outputs can be driven separately by the fire alarm control panel and can be used for the control of devices such as dampers or for plant and equipment shut-down. Also available as a DIN Rail mountable version. Both models feature an integral short-circuit isolator.

- ▶ 4 x inputs & 4x outputs
- ▶ Single loop address
- ▶ Loop powered
- ▶ DIL switch addressable
- ▶ 4 change-over relay outputs
- ▶ 4 independent inputs for monitoring of volt-free contacts
- ▶ Deeper back box available CHQ-BACKBOX
- ▶ Can be used with CHQ-BACKBOX to comply with BS 7671.
- ▶ Both models approved by LPCB & VdS

 CHQ-PCM/DIN(SCI)



Lid Colours

- Transparent Black
- Opaque White



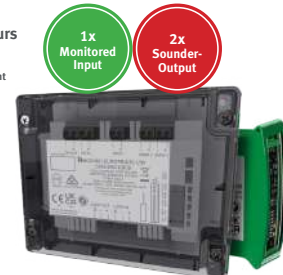
Lid Colours

- Transparent Black
- Opaque White



Lid Colours

- Transparent Black
- Opaque White



### CHQ-DIM2(SCI)

An Intelligent Dual Input Module designed to interface to a variety of inputs such as door contacts, sprinkler flow/door switches and plant equipment. The unit supports a resistive feature for the monitoring of the inputs when operating in Enhanced mode. Please check for panel support of this feature, failure to do so will regress this device into Compatibility mode where the inputs are not monitored. Also available as a DIN Rail mountable version. Both models feature an integral short-circuit isolator.

- ▶ Loop powered
- ▶ Single loop address
- ▶ DIL switch addressable
- ▶ Each input can be configured to operate on either an open or short-circuit.
- ▶ Each input is monitored or can operate on a short/open circuit .
- ▶ Deeper back box available - CHQ-BACKBOX (complies with BS 7671).
- ▶ Both models approved by LPCB & VdS

 CHQ-DIM2/DIN(SCI)

### CHQ-DZM(SCI)

An Intelligent Dual Zone Module designed to allow up to 60 conventional detectors (30 per zone) or up to 6 SPC-ET (3 per zone) to be interfaced to Hochiki's ESP analogue addressable system. The unit also features Schottky and Zener line continuity options. Also available as a DIN Rail mountable version. Both models feature an integral short-circuit isolator.

- ▶ 2 x zonal inputs
- ▶ Single loop address
- ▶ Supports two independent zones of conventional detectors
- ▶ DIL switch addressable
- ▶ Requires an auxiliary 24 VDC supply
- ▶ Deeper back box available - CHQ-BACKBOX (complies with BS 7671).
- ▶ Both zones fully monitored for Open and short Circuit
- ▶ Both models approved by LPCB & VdS

 CHQ-DZM/DIN(SCI)

### CHQ-SZM2(SCI)

An Intelligent Single Zone Monitor designed to allow up to 6 conventional detectors or 1 SPC-ET to be interfaced to Hochiki's ESP analogue addressable system. Also available as a DIN Rail mountable version. Both models feature an integral short-circuit isolator.

- ▶ 1 x zonal input
- ▶ Loop powered
- ▶ Up to 6 Conventional Detectors
- ▶ DIL switch addressable
- ▶ Single loop address
- ▶ Remote LED output
- ▶ Deeper back box available - CHQ-BACKBOX (complies with BS 7671).
- ▶ Fully monitored for Open and Short Circuit faults
- ▶ Both models approved by LPCB & VdS

 CHQ-SZM2/DIN(SCI)

### CHQ-DSC2(SCI)

An Intelligent Dual Sounder Controller which has been designed to provide two sounder outputs (that can be driven separately) with full fault monitoring. The monitored input can be used for local power supply fault monitoring or as a general-purpose input. Also available as a DIN Rail mountable version. Both models feature an integral short-circuit isolator.

- ▶ Single loop address
- ▶ Two independent sounder circuits
- ▶ DIL switch addressable
- ▶ Each circuit fully monitored for Open and Short Circuit faults
- ▶ Each alarm circuit fused at 1 A
- ▶ Auxiliary monitored Input
- ▶ Outputs are synchronised and can be driven continuously or intermittently
- ▶ 24 VDC auxiliary power required
- ▶ Deeper back box available - CHQ-BACKBOX (complies with BS 7671).
- ▶ Both models approved by LPCB & VdS

 CHQ-DSC2/DIN(SCI)



### HCP-E(SCI)

An Intelligent Manual Call Point Isolator fully compatible with Hochiki's ESP analogue addressable protocol and featuring an integral short-circuit isolator (SCI). Features a bi-coloured LED to indicate either fire (red) or short-circuit (amber). Also features plug-in wiring terminals for easy installation.

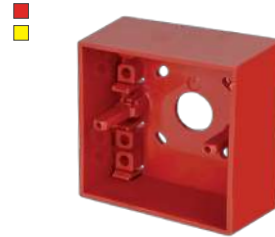
- ▶ Fast response
- ▶ Integral short-circuit isolator
- ▶ Bi-colour status LED
- ▶ Non-frangible element fitted as standard (conforms to EN54)
- ▶ Addressed with TCH-B200 Hand Held Programmer & PL-3
- ▶ Surface or flush mounting
- ▶ LPCB Approved to EN54
- ▶ Approved by LPCB
- ▶ Marine-Approved, Railway-Approved and SIL2 Capable variants available



### HCP-W(SCI)

An Intelligent IP67 Weatherproof Manual Call Point Isolator fully compatible with Hochiki's ESP analogue addressable protocol and featuring an integral short-circuit isolator (SCI). Features a bi-coloured LED to indicate either fire (red) or short-circuit (amber). Also features plug-in wiring terminals for easy installation.

- ▶ Fast response
- ▶ Integral short-circuit isolator
- ▶ Bi-colour status LED
- ▶ Non-frangible element fitted as standard (conforms to EN54)
- ▶ Addressed with TCH-B200 Hand Held Programmer & PL-3
- ▶ Surface mounting
- ▶ LPCB Approved to EN54
- ▶ IP67 rated
- ▶ Approved by LPCB
- ▶ Marine-Approved and SIL2 Capable variants available



### SR BACKBOX

Call Point Surface Mounting Box for HCP-E(SCI)

- ▶ Allows addressable call point HCP-E to be surface mounted.



### PS200

Hinged cover for Call Point. An acrylic hinged cover for the HCP-E(SCI) manual call point range which protects against accidental operation/vandalism.

- ▶ Easy to install
- ▶ Protects against accidental activation
- ▶ Requirement under BS5839.



### TCH-B200

A Hand Held Address Programmer designed to address the ESP range of Sensors and other intelligent devices such as the YBO-BS Base Sounder. Designed to be light, robust and easy to use it operates from a single PP3 size battery which can provide up to 8000 operations.

- ▶ Lightweight design
- ▶ Quick and reliable addressing
- ▶ Up to 8000 address settings from one battery
- ▶ Displays sensor analogue value.

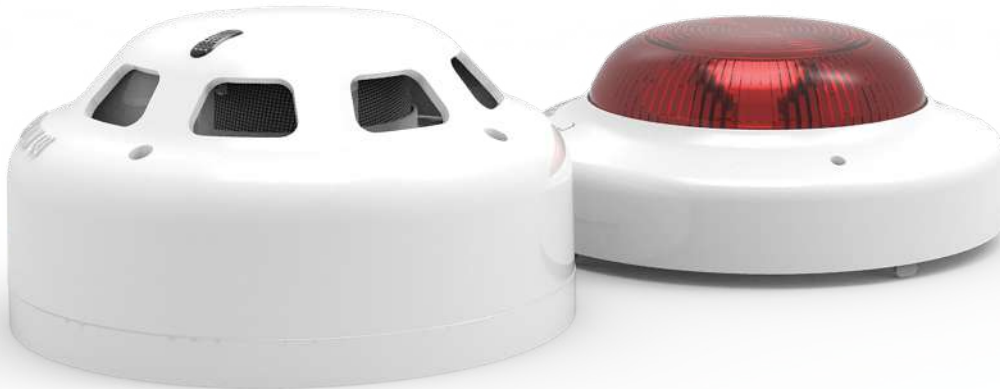
Note: Button colour may vary.



**CDX**  
Conventional  
**Fire Detection**

Hochiki's CDX range offers one of the most extensive product portfolios available, providing solutions for most conventional fire detection applications as well as security systems, due to its wide operating voltage range (9.5~30 VDC).

[www.hochikieurope.com/cdx](http://www.hochikieurope.com/cdx)







### SOC-E3N

A Conventional Photoelectric Smoke Detector which is fully compatible with the majority of existing Conventional systems.

- ▶ Removable, High Performance chamber
- ▶ Automatic Sensitivity Window Verification (ASWW) – Drift Compensation Technology
- ▶ Remote Indicator output
- ▶ Wide voltage range (12 ~ 30 VDC)
- ▶ Low profile design with one piece outer cover
- ▶ Single fire LED - 360° viewing
- ▶ Range of mounting bases
- ▶ Approved by LPCB and VdS



### DCD-AE3

A Conventional Rate of Rise Heat Detector incorporating a 60°C fixed temperature element. The thermistor and linearising circuit provide an accurate linear response Heat Detector. A third terminal provides integral remote indicator output.

- ▶ Electronic linear heat detection
- ▶ Remote Indicator output
- ▶ Wide voltage range (9.5 ~ 30 VDC)
- ▶ Twin fire LEDs allow 360° viewing
- ▶ Range of mounting bases
- ▶ Approved by LPCB & VdS.



### DCD-CE3

A Conventional Rate of Rise Heat Detector incorporating a 90°C fixed temperature element. The thermistor and linearising circuit provide an accurate linear response Heat Detector. A third terminal provides integral remote indicator output.

- ▶ Electronic linear heat detection
- ▶ Remote Indicator output
- ▶ Wide voltage range (9.5 ~ 30 VDC)
- ▶ Twin fire LEDs allow 360° viewing
- ▶ Full range of mounting bases
- ▶ Approved by LPCB & VdS.



### DFJ-AE3

A Conventional 60°C Fixed Temperature Heat Detector using a thermistor and linearising circuit to provide an accurate linear response Heat Detector. A third terminal provides integral remote indicator output.

- ▶ Electronic linear heat detection
- ▶ Remote Indicator output
- ▶ Wide voltage range (9.5 ~ 30 VDC)
- ▶ Twin fire LEDs allow 360° viewing
- ▶ Fixed Temperature Detector
- ▶ Full range of mounting bases
- ▶ Approved by LPCB & VdS.



### DFJ-CE3

A Conventional 90°C Fixed Temperature Heat Detector using a thermistor and linearising circuit to provide an accurate linear response. A third terminal provides integral remote indicator output.

- ▶ Electronic linear heat detection
- ▶ Wide voltage range - can be installed on security systems
- ▶ Twin fire LEDs allow 360° viewing
- ▶ Fixed Temperature Detector
- ▶ Full range of mounting bases
- ▶ Approved by LPCB & VdS.



### DFG-60BLKJ

An IP67 Waterproof Conventional 60°C Fixed Temperature Heat Detector with minimal standby current and high reliability. Particularly suited to environments, which are exposed to high levels of condensation or are hosed down.

- ▶ Waterproof design – rated to IP67
- ▶ Low profile shape
- ▶ Utilises a bi-metallic strip to sense temperature change
- ▶ No Mounting base required
- ▶ Minimal standby current
- ▶ Approved by LPCB & VdS.



### DRD-E

A Conventional Flame Detector designed for internal use to detect large flames. The detector fits any of the CDX range of mounting bases. The detection zone is a 90° cone and the detection range is up to and including 25m.

- ▶ Class 1 performance as defined in
- ▶ BS EN54-10:2002 (range up to 25m)
- ▶ Single IR technology
- ▶ Robust and slim design
- ▶ Low current consumption
- ▶ Easy to install
- ▶ Fits any of the CDX Range of mounting bases
- ▶ Twin LEDs for 360° view
- ▶ Approved by LPCB & VdS.



### IFD-E

A Conventional IR<sup>3</sup> Infrared Flame Detector designed to respond to low-frequency (1 to 15Hz) flickering IR radiation emitted from flames during combustion, the unit can discriminate between flames and spurious sources of radiation such as sunlight. An I.S. version and an explosion-proof version are also available.

- ▶ Triple IR sensor
- ▶ Class 1 sensitivity to EN54-10 detects 0.1m<sup>2</sup> fire @ 25m
- ▶ Excellent optical interference immunity (solar blind)
- ▶ Selectable output options - conventional 2-wire, 4-20 mA, latching or non-latching relay contacts, fire/fault, pre-alarm
- ▶ Selectable response speed
- ▶ Optical self-test
- ▶ Low power consumption
- ▶ Approved by LPCB
- ▶ SIL Capable.



### 16591

**A UV/Dual IR Flame Detector, Alloy Housing**  
Model 16591 is an IR<sup>2</sup> flame detector with an additional UV detection element, designed for use where open flaming fires may be expected and responds to the light emitted from flames during combustion.

The detector discriminates between flames and other light sources by responding only to particular optical wavelengths and flame flicker frequencies. This enables the detector to avoid false alarms due to such factors as flickering sunlight.

- ▶ Highest immunity to false sources
- ▶ Suitable for indoor and outdoor areas
- ▶ Detects invisible flames from fuels such as Hydrogen and other inorganic fuels
- ▶ Selectable response speed
- ▶ Optical self-test
- ▶ Low power consumption
- ▶ Approved to EN54.



### 1800-101 TT2

**The Flame Detector Tester TT2** is a test and calibration unit explicitly designed to work with the full range of IFD Flame Detectors. Simple to use hand held unit with rechargeable NiCd battery pack and charger

- ▶ Used to test UV, UV/IR, UV/IR2, UV/IR3 flame detectors, in-situ
- ▶ 8m testing range
- ▶ Can calibrate flame detectors (with kit - sold separately)
- ▶ Integral rechargeable battery



### SPC-ET

**A Conventional Beam Smoke Detector** that consists of an emitter and receiver that cover a distance of 5 - 100m providing a maximum coverage of 1500m<sup>2</sup>. Features an automatic signal strength adjustment facility and is also available with a latching or a non-latching relay.

- ▶ 5 - 100m range
- ▶ Automatic compensation
- ▶ Automatic signal strength adjustment
- ▶ Can be interfaced onto ESP system via CHQ-DZM(SCI) or CHQ-SZM2(SCI)
- ▶ Approved by LPCB & VdS
- ▶ Emitter unit can be powered direct from zone (or loop).



### YBN-R/6

**A Conventional Detector Mounting Base** associated with the CDX Range of Detectors and Beacons and is fully compatible with the majority of existing conventional fire alarm control panels.

- ▶ Integral remote indicator output
- ▶ Low Profile, only 8mm
- ▶ Rugged design and electronics free
- ▶ Quick connections via square cable clamps
- ▶ Accepts up to 2.5mm<sup>2</sup> cables
- ▶ Bayonet slot, low insertion force for detectors.



### YBO-R/6PA

A Conventional Detector Mounting Base for 2-Wire systems where detectors and sounders are on same zone cables\*.

- ▶ Integral remote indicator output
- ▶ Rugged design
- ▶ Dedicated cable screen terminal
- ▶ Quick connection via square cable clamps
- ▶ Accepts up to 2.5mm<sup>2</sup> cables
- ▶ Bayonet slot, low insertion force for detectors
- ▶ Approved by LPCB.



### YBO-R/6R

A Conventional Latching Relay Detector Mounting Base associated with the CDX Range of Detectors and is fully compatible with the majority of existing conventional fire alarm and security control panels.

- ▶ Integral remote indicator output
- ▶ Rugged design
- ▶ Quick connections via square cable clamps
- ▶ Accepts up to 2.5mm<sup>2</sup> cables
- ▶ Bayonet slot, low insertion force for detectors
- ▶ Approved by LPCB
- ▶ Wide voltage range - can be used in security systems.
- ▶ Approved by LPCB



### YBO-R/6RN

A Conventional Non-Latching Relay Detector Mounting Base associated with the CDX Range of Detectors and is fully compatible with the majority of existing conventional fire alarm and security control panels.

- ▶ Integral remote indicator output
- ▶ Wide voltage range - can be used in security systems
- ▶ Rugged design
- ▶ Quick connections via square cable clamps
- ▶ Accepts up to 2.5mm<sup>2</sup> cables
- ▶ Bayonet slot, low insertion force for detectors
- ▶ Approved by LPCB.



### YBO-R/6RS

A Conventional Latching Schottky Diode Relay Detector Mounting Base associated with the CDX Range of Detectors and is fully compatible with the majority of existing conventional fire alarm control panels.

- ▶ Integral remote indicator output
- ▶ In-line Schottky Diode for Line Continuity
- ▶ Rugged design
- ▶ Quick connections via square cable clamps
- ▶ Accepts up to 2.5mm<sup>2</sup> cables
- ▶ Bayonet slot, low insertion force for detectors
- ▶ Approved by LPCB.



### YBN-R/6SK

A Conventional Detector Mounting Base with in-line Schottky Diode, associated with the CDX Range of Detectors and is fully compatible with the majority of existing conventional fire alarm control panels.

- ▶ Integral remote indicator output
- ▶ In-line Schottky Diode for line continuity
- ▶ Low profile, only 8mm
- ▶ Rugged design
- ▶ Quick connections via square cable clamps
- ▶ Accepts 2.5mm<sup>2</sup> cables
- ▶ Bayonet slot, low insertion force for detectors.



### CSB-E

A Conventional Base Sounder which has been designed to complement the CDX range of detectors. Improved electronic design enables very low current consumption whilst providing a range of tones and volumes selectable from each unit.

- ▶ Robust design
- ▶ Low current consumption
- ▶ Easy to install
- ▶ Maximum 93 dB(A) @ 1m (Tone 1)
- ▶ 32 user-selectable tones and 3 user-selectable volumes
- ▶ Lockable cap available (CS/CAP).



### CSBB-E

A Conventional Base Sounder Beacon which has been designed to complement the CDX range of detectors. Improved electronic design enables very low current consumption whilst providing a range of tones and volumes selectable from each unit. Features integral beacon.

- ▶ Robust design
- ▶ Low current consumption
- ▶ Easy to install
- ▶ Maximum 93 dB(A) @ 1m (Tone 1)
- ▶ 32 user-selectable tones and 3 user-selectable volumes
- ▶ Utilises high intensity LEDs
- ▶ Lockable cap available (CS/CAP)
- ▶ Supplementary indicator
- ▶ Non EN54-23 compliant.



### CWSB-E

A Conventional Wall Sounder Beacon with improved electronic design enables very low current consumption whilst providing a range of tones and volumes selectable from each unit. Features integral beacon.

- ▶ Robust design
- ▶ Low current consumption
- ▶ Easy to install
- ▶ Maximum 113 dB(A) @ 1m (Tone 15)
- ▶ 32 user-selectable tones
- ▶ Utilises high intensity LEDs
- ▶ Supplementary indicator
- ▶ Non EN54-23 compliant.



### IDENTIFIRE RL

A Conventional Remote Lamp Unit designed for both conventional and analogue addressable fire alarm systems.

Available as a visual indicator and audible/visual indicator, the Identifire Remote Lamp Unit can be easily retrofitted to existing systems or incorporated as part of a new installation.

- ▶ 4 x 20 mm knockouts for surface and glanded entry
- ▶ 2 Wire compatibility
- ▶ Will operate at both 12 and 24 VDC
- ▶ Low current consumption
- ▶ Available as both a lamp and combined lamp/buzzer
- ▶ Discrete design
- ▶ Available in Red or White.

### IDENTIFIRE VID

A Conventional Visual Indicating Device (VID) suitable for use on fire, security and other building control systems.

Used as an ancillary visual alarm in fire systems, the Identifire range of VID's are suitable for conventional and 2 Wire fire systems as well as general alarm and signalling systems.

- ▶ Choice of 5 coloured lenses white, red, blue, green and amber
- ▶ 2 Wire compatibility
- ▶ 4 x 20 mm knockouts for surface and glanded entry
- ▶ Aesthetically appealing design
- ▶ Available in Red or White.

### IDENTIFIRE TS

A Conventional Tritone Sounder designed with a low profile sleek design, the Hochiki Tritone sounder is ideal for standard installations and where aesthetics are an important consideration.

Tritone's low operating current means it can easily be interfaced onto Analogue Addressable fire alarm systems with a suitable output module.

- ▶ Simple installation for new or retrofit applications
- ▶ 2 Wire compatibility
- ▶ Aesthetically appealing design
- ▶ Sounder approved by UL to EN 54 Part 3
- ▶ Selectable Output - High: 92-96 dB(A) / Low: 86-90 dB(A)
- ▶ 4 x 20mm knockouts for surface and glanded entry
- ▶ Available in Red or White.

### IDENTIFIRE TSB

A Conventional Tritone Sounder Beacon designed for conventional fire alarm systems, it is an ideal solution for environments that require a discreet but affective device.

Used as an ancillary visual alarm in fire systems; Hochiki Tritone Sounder VID's are suitable for conventional and 2 Wire fire systems as well as general alarm and signalling systems.

- ▶ Easy installation for new or retrofit applications
- ▶ 2 Wire compatibility
- ▶ Aesthetically appealing design
- ▶ Sounder approved by UL to EN 54 Part 3
- ▶ 4 x 20 mm knockouts for surface and glanded entry
- ▶ Selectable Output - High: 92-96 dB(A) / Low: 86-90 dB(A)
- ▶ Available in Red or White.



### IDENTIFIRE AR

A Conventional Auxiliary Relay Unit featuring two volt free contacts to control/ interface additional equipment from the Fire Alarm Control Panel.

The relay allows other equipment to be engaged or disengaged during a fire alarm condition.

- ▶ 4 x 20 mm knockouts for surface and glanded entry
- ▶ 2 Wire compatibility
- ▶ Bright LED signals activation
- ▶ Can be flush or surface mounted
- ▶ Consistent with all other Identifire products
- ▶ Dual pole - live and negative both isolated
- ▶ Available in Red or White.



### CLB-E

A Conventional Visual Indicator for use on 24 V Sounder Circuits. The unit is fitted with a Fresnel lens and high-intensity LEDs, a design which produces a highly visible flash.

The casing exactly matches the CDX Detector range in shape and colour providing seamless integration.

- ▶ High Intensity LED technology
- ▶ Fits standard CDX base (YBN-R/6)
- ▶ Supplementary indicator
- ▶ Not EN54-23 compliant
- ▶ Colour-matched to existing detector and base ranges.



### CWST-S5

A Conventional Beacon which features high output LEDs, advanced optics and an innovative lens design, providing outstanding Omni-directional light coverage at low current draw.

Specifically designed for, and approved to meet EN54-23. CWST-S5 delivers quality, reliability and long operational life.

- ▶ Approved to EN54-23, C & W categories\*
- ▶ Advanced optics ensures superior light coverage at low current draw
- ▶ Available in either red or white casings
- ▶ Available with either a red or white LED
- ▶ Synchronised flash exceeds EN54-23 standard
- ▶ Soft start feature reduces power surges during system start-up.



### CWST-W5

A Conventional Weatherproof Beacon, which features high output LEDs, advanced optics and an innovative lens design, providing outstanding Omni-directional light coverage at low current draw.

Specifically designed for, and approved to meet EN54-23. Weatherproof base provides IP65 for external use applications.

- ▶ Approved to EN54-23, C & W categories\*
- ▶ Available in either red or white casings
- ▶ Available with either a red or white LED
- ▶ Synchronised flash exceeds EN54-23 standard
- ▶ Soft start feature reduces power surges during system start-up
- ▶ Advanced optics ensures superior light coverage at low current draw.

\*For product variants, see pages 50 to 53.



### CLAMBELL

A Conventional Fire Alarm Bell EN54-3 approved fire bell incorporates traditional and innovative design.

Low power consumption and good sonorous tone result from use of an aluminium gong which also significantly reduces weight.

Three mounting versions are available:

- Shallow base
- Deep base and purpose designed
- Weatherproof option.
  - ▶ Permanently fitted gong
  - ▶ Specifically designed weatherproof back box
  - ▶ Mounting options for European, Asian and US style installations
  - ▶ Hinged design for quick and easy installation
  - ▶ Approved by LPCB.



### CCP-E

A Conventional Manual Call Point based upon the industry standard KAC world series housing. The unit can support either a 'Frangible Glass' element or a 'Non Frangible Plastic' element. It is also supplied complete with SR-BACKBOX for surface mounting.

Note - Yellow version not EN54 compliant

- ▶ Approved to EN54-11:2001
- ▶ Other colours available on request
- ▶ Terminals can accommodate up to a 2.5mm<sup>2</sup> solid conductor.
- ▶ Supplied with non-frangible element as standard
- ▶ Approved by LPCB



### CCP-W

An IP67 Conventional Weatherproof Call Point which can be used externally. The unit can support either a 'Frangible Glass' element or a 'Non Frangible Plastic' element

- ▶ Approved to EN54-11:2001
- ▶ Supplied with back-box as standard
- ▶ Other colours available on request
- ▶ Ingress Protection rated to IP67
- ▶ Terminals can accommodate up to a 2.5mm<sup>2</sup> solid conductor.
- ▶ Supplied with non-frangible element as standard
- ▶ Approved by LPCB





### CCP-SAVWIRE

Conventional Savwire Call Point Red based upon the industry standard KAC world series housing and features easy to install, push-fit wiring terminals. The unit has been specifically designed for use on "Savwire" (two-wire) systems.

The unit can support either a 'Frangible Glass' element or a 'Non Frangible Plastic' element.

- ▶ Approved to EN54-11:2001
- ▶ Terminals can accommodate up to a 2.5mm<sup>2</sup> solid conductor
- ▶ Designed for use on "Savwire" (two-wire) systems\*.



### CCP-KS

Conventional Key Switch Manual Call-Point based upon the industry standard KAC 9000 series housing and features flying leads for simple wiring.

The unit features two key positions marked as "1" and "0" – with the key easily removable in either position

- ▶ Two position keyswitch (marked 1 and 0)
- ▶ Key removable in both positions
- ▶ Supplied with back box for surface fixing
- ▶ Terminals can accommodate up to a 2.5mm<sup>2</sup> solid conductor
- ▶ Supplied in RED - other colours available on request
- ▶ Suitable for fire, security and other specialist applications.

\*Please ensure control panel compatibility.



## Linear Heat Detection Cable

The Linear Heat Detection Cable (LHDC) System from Hochiki is designed to provide early detection of fire and overheating in circumstances where other forms of detection would not be viable, either due to inability to sustain the environment requirements or through prohibitive costs.

[www.hochikieurope.com/lhdc](http://www.hochikieurope.com/lhdc)





### LDM-519-LP

**Analogue LHDC Interface** The module is designed to monitor a zonal length of Analogue Cable for both an elevated temperature (Fire) condition, and Fault Status (Open & Short Circuit).

- ▶ Adjustable Alarm set point
- ▶ LED Indication of Fire, Fault and Supply Status
- ▶ Fault Monitoring for open & short circuits
- ▶ Selectable Latching / Auto reset operation
- ▶ VFC outputs for Fire & Fault conditions
- ▶ SIL 2 Certified
- ▶ 24 volt supply required when connected to an I/O unit
- ▶ Analogue address interface, Line powered configurable
- ▶ Operable from two wire fire panel trigger circuits.



### LHDC ANALOGUE CABLE

**Analogue LHDC Heat Detection Cable** is designed to provide early detection of fire and overheating in circumstances where other forms of detection would not be viable, either due to inability to sustain the environment requirements or through prohibitive costs.

- ▶ Adjustable Alarm set point
- ▶ Recoverable and resettable operation
- ▶ Can detect hot spots
- ▶ Zones of up to 500m in length
- ▶ Mechanical & Chemical protection available
- ▶ Easy to install
- ▶ RoHS compliant – Lead Free
- ▶ Resettable cable
- ▶ Compatible with a full range of monitoring devices.



### LDM-519-DDL

**Digital Interface with Distance Display** is designed to monitor a length of Digital Linear Heat Detection Cable (LHDC) for both a fire condition, and fault status (open circuit).

- ▶ Test & Reset functions
- ▶ Display of Alarm Location: Distance in metres
- ▶ Fault monitoring of LHDC for open circuit conditions
- ▶ LED Indication of Fire, Fault and Supply Status
- ▶ Operable from two wire fire panel conventional circuits. Line / Low Power
- ▶ LHDC Hazardous Area use by means of intrinsically Safe Zener Barriers.
- ▶ Din Rail mounting
- ▶ Analogue address loop interfacable - Loop Powered configurable
- ▶ 4 to 20 mA instrumentation current loop output
- ▶ VFC outputs for Fire & Fault conditions - Selectable.



### LHDC DIGITAL CABLE

**Digital LHDC Heat Detection Cable** is designed to provide early detection of fire conditions and overheating in circumstances where other forms of detection would not be viable, either due to an inability to sustain the environment requirements or through prohibitive costs.

- ▶ UL Listed
- ▶ SIL 2 Certified
- ▶ Non-resettable cable
- ▶ Early Detection of hazards at temperatures well below flame point
- ▶ Rugged construction—Stainless Steel outer sheath available
- ▶ Fixed Alarm Trigger Temperature
- ▶ Compatible with many existing zone monitors/ Control Equipment
- ▶ Intrinsically Safe Configurable for Hazardous Areas.



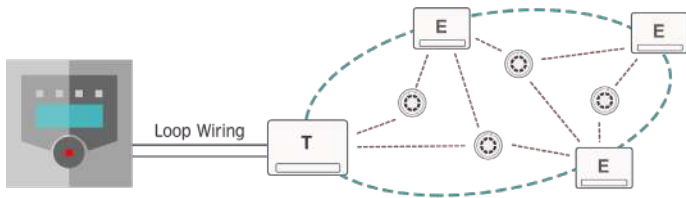
**Ekho**  
Hybrid Wireless  
Fire Detection

Hochiki's Ekho system raises wireless fire detection and alarm systems to new levels of reliability and flexibility.

The hybrid system utilises the latest MESH net technology to provide absolute, yet economic wireless fire system installations with the minimum of disturbance to the surroundings. Ideal for historic buildings, remote or temporary sites and any project where the installation of fire cabling is difficult, overly expensive or prohibited.

[www.hochikieurope.com/ekho](http://www.hochikieurope.com/ekho)





#### Self-configuring mesh technology in the Ekho range is a new and unique level of reliability

- ▶ Each device automatically chooses its parent expander
- ▶ Expanders automatically form a network for delivering information to the main control panel

#### Self-configuring mesh technology provides

- ▶ High level of reliability
- ▶ Automatically adapting to changing operating conditions: all devices automatically choose a parent expander depending on the quality of connection
- ▶ Extended information system capacity allowing complex issues to be managed and solved
- ▶ A simple design and commissioning process

The system will automatically decide which device connects to which expander and build a wireless network.

#### Advantages for installers

- ▶ Simplified design and planning process
- ▶ Faster commissioning process
- ▶ Solutions to complicated problems and challenges

#### Ekho Hybrid Wireless automatically

- ▶ Connects the devices with their corresponding expanders and reconfigures if necessary
- ▶ Adapts to changing operating conditions.

In addition, both the wireless and wired components of the system can be configured in one software.



#### EK-WLS-TRH

A Hybrid Wire to Wireless Translator Module is a fully intelligent wired to wireless Translator Module. Compatible with the Hochiki ESP protocol, the module allows the use of fully intelligent radio (wireless) field devices alongside standard hard wired devices.

The Translator Module allows the connection of up to 126\* radio field devices to an addressable fire detection loop. Multiple Translators can be used on a system providing the system has sufficient loop power and addresses available.

- ▶ Approved to EN54-17, 18 and 25
- ▶ RED compliant
- ▶ Loop Powered
- ▶ OLED Graphical Display
- ▶ Integral Loop Short Circuit Isolator
- ▶ Bi-directional wireless communication
- ▶ Self-optimising wireless amplitude and frequency
- ▶ Tamper switch
- ▶ Flexible on site device adjustment
- ▶ Makes additions to existing wired systems easy and cost effective.
- ▶ Optional Back Box available if 20mm minimum glanding is required.



#### EK-WLS-EXP

A Hybrid Wireless Expander Module increases radio coverage of an Ekho Translator Module, allowing the use of the system in larger buildings and in difficult wireless environments. Multiple Expanders can be utilised in a micro cell structure to provide a solution to large, complex systems.

When multiple Expander Modules (two or more) are used, these provide a MESH solution maintaining the wireless systems integrity.

- ▶ Approved to EN54-18 and 25
- ▶ RED compliant
- ▶ Supports MESH communications
- ▶ Bi-directional wireless communication
- ▶ Self optimising wireless amplitude and frequency
- ▶ Makes additions to existing wired systems easy and cost effective
- ▶ Requires external power supply (24 VDC).

\*Dependent on available loop address capacity.



### EK-WL8-OV

A Hybrid Wireless Optical Smoke Sensor with Built in Voice Annunciator and VAD with white LEDs and 0.5 Hz flash rate. The sensor utilises optical smoke detection technologies and algorithms for improved performance, which can contribute to reducing unwanted alarms.

Utilising well-proven adaptive radio signal processing algorithms ensure the highest levels of life safety and system reliability are achieved.

- ▶ Approved to EN54-3, 7, 23 & 25
- ▶ RED compliant
- ▶ Voice Sounder and VAD Incorporated
- ▶ Internal algorithm processing for optimal performance
- ▶ Tamper switch
- ▶ Up to 10 years battery life\*
- ▶ Utilises standard low cost lithium battery technology
- ▶ Bi-directional wireless communications
- ▶ Self optimising wireless amplitude and frequency
- ▶ Compatible with all Ekho Translator/Expander modules.



### EK-WL8-O

A Hybrid Wireless Optical Smoke Detector which utilises optical smoke detection technologies and algorithms for improved performance.

Utilising well-proven adaptive radio signal processing algorithms ensure the highest levels of life safety and system reliability are achieved.

An in-built magnet test allows easy activation to verify correct functionality and response.

- ▶ Approved to EN54-7 & 25
- ▶ RED compliant
- ▶ Internal algorithm processing for optimal performance
- ▶ Tamper switch
- ▶ Up to 10 years battery life\*
- ▶ Utilises standard low cost lithium battery technology
- ▶ Bi-directional wireless communications
- ▶ Self optimising wireless amplitude and frequency
- ▶ Compatible with all Ekho Translator/Expander modules.



### EK-WL8-H

A Hybrid Wireless A1R Heat Sensor designed for open area protection.

The sensor is designed for installations where smoke detection technology is not suitable.

The well-proven adaptive radio signal processing algorithms ensure the highest levels of life safety and system reliability are achieved. An in-built magnet test allows easy activation to verify correct functionality and response.

- ▶ Approved to EN54-5 and 25
- ▶ RED compliant
- ▶ Internal algorithm processing for optimal performance
- ▶ Tamper switch
- ▶ Up to 10 years battery life\*
- ▶ Utilises standard low cost lithium battery technology
- ▶ Bi-directional wireless communications
- ▶ Self optimising wireless amplitude and frequency
- ▶ Compatible with Ekho Translator/Expander module.



### EK-WL8-OH

A Hybrid Wireless Multi-Sensor is the latest in wireless multi-criteria sensor technology.

The sensor combines both smoke and heat detection technologies (A1R) for improved performance. Utilising well-proven adaptive radio signal processing algorithms ensures that the highest levels of life safety and system reliability are achieved.

An in-built magnet test allows easy activation to verify correct functionality and response.

- ▶ Approved to EN54-5,7,25 & 29
- ▶ RED compliant
- ▶ Internal algorithm processing optimises performance
- ▶ Tamper switch
- ▶ Up to 10 years battery life\*
- ▶ Utilises standard low-cost lithium battery technology
- ▶ Bi-directional wireless communications
- ▶ Self optimising wireless amplitude and frequency
- ▶ Compatible with all Ekho Translator/Expander modules.



### EK-WLS-IN

A Hybrid Wireless Single Channel Input Module providing a convenient and cost effective solution for monitoring third party equipment.

The module is also controllable from the Fire Control Panel via the cause and effect programming and offers the same level of flexibility as a standard addressable module.

Optional back box available.

- ▶ Approved to EN54-18 and 25
- ▶ RED compliant
- ▶ Monitored Input
- ▶ Bi-directional wireless communication
- ▶ Self optimising wireless amplitude and frequency
- ▶ Tamper Switch
- ▶ Up to 10 years battery life\*.



### EK-WLS-OUT

A Hybrid Wireless Powered Output Module which allows the control panel to switch the circuits of an external device wirelessly via an Ekho Translator/Expander module.

The unit provides a switched voltage output (24 VDC recommended) only. Optional back box is available.

Optional back box is available.

- ▶ Approved to EN54-18 and 25
- ▶ RED compliant
- ▶ Contact is configured as N/O contact
- ▶ Bi-directional wireless communication
- ▶ Up to 10 years battery life\*
- ▶ Self optimising wireless amplitude and frequency
- ▶ Includes a fault monitoring input
- ▶ Requires external power supply (24 VDC).



### EK-WLS-CP

A Hybrid Wireless Resetttable Manual Call Point which features a simulated glass front. When activated, a plastic 'flag' is displayed in the window of the unit; the supplied key will reset the flag and unit.

Supplied with back box.

- ▶ Approved to EN54-11 & 25
- ▶ RED compliant
- ▶ Bi-directional wireless communication
- ▶ Self optimising wireless amplitude and frequency
- ▶ Tamper switch
- ▶ Utilises standard low cost lithium battery technology
- ▶ Up to 10 years battery life\*
- ▶ Resetttable Element
- ▶ Clear 'device activated' warning flag.



### EK-WLS-SND

A Hybrid Wireless Sounder equipped with 4 tones forms the core of our wireless EN54-3 modular alarm device range which can be set locally at the sounder as well as volume control to allow for effective communication.

When configured onto an Ekho Translator, the Wireless Sounder is fully addressable and benefits from intelligent monitoring functionality.

- ▶ Flexible modular design
- ▶ Approved to EN54-3 and 25
- ▶ RED compliant
- ▶ Bi-directional wireless communication
- ▶ Self optimising wireless amplitude and frequency
- ▶ Tamper Switch
- ▶ 4 Tone Settings
- ▶ Up to 10 year battery life\*
- ▶ Easy to install.



### EK-WL8-RI

The EK-WL8-RI wireless remote indicator is used to indicate the status of an Ekho wireless detector when installed in hidden or hard to access locations such as ceiling voids or locked rooms. It is fully compatible with the Ekho wireless Translator and Expander modules.

Utilising well-proven adaptive radio signal processing algorithms ensure the highest levels of life safety and system reliability are achieved.

The remote indicator has a battery life of up to ten years\* and will illuminate red when activated.

- ▶ Tamper switchy
- ▶ Up to 10 years battery life
- ▶ Utilises standard low cost lithium battery technology
- ▶ Bi-directional wireless communications
- ▶ Self optimising wireless amplitude and frequency
- ▶ Designed for use with Ekho Translator and Expander modules.



### 10-2210WSR-S

Conventional Auxiliary Relay Unit can be connected to a Fire Alarm sounder circuit (subject to local codes of practice) without compromising circuit EOL monitoring.

The relay allows other equipment to be engaged or disengaged during a fire alarm condition.

- ▶ 4 x 20 mm knockouts for surface and glanded entry
- ▶ 2 Wire compatibility
- ▶ Bright LED signals activation
- ▶ Can be flush or surface mounted
- ▶ Dual pole - live and negative both isolated.



### EK-BBOX-1

Expander/Output/Translator Module Backbox

- ▶ Easy clip, wall mountable fixing unit
- ▶ Required for 20mm minimum glanding purposes with EK-WL8-TRH
- ▶ 4 x 20mm knockout connections
- ▶ 2 x cable gland connections
- ▶ Aesthetic design.



### EK-BOX-2

Input Module Backbox

- ▶ Meets EU standard for device enclosures
- ▶ 4 x 20mm knockout connections
- ▶ 4 x 25mm knockout connections
- ▶ 1 x gland connection
- ▶ 4 x 3M sticky pads.





### EK-WL8-SK

Our Hybrid Wireless Survey Test Kit consists of a portable wireless translator, a portable smoke detector and a keypad.

The keypad displays the wireless communication signals between the detector and the translator module, enabling you to design a wireless system successfully.

Power supply not included.

- ▶ Robust carry case
- ▶ Easy to use (training is required before purchase)
- ▶ Allows for surveying potential hybrid wireless installations.



### STI-13110FR-BREAK

Weatherproof Manual Call Point Cover

This weatherproof call point cover can be used in conjunction with the EK-WL8-CP wireless manual call point to provide secure, weatherproof protection without restricting legitimate operation.

- ▶ Robust polycarbonate construction
- ▶ A simple 4 fixing installation can retrofit over existing device.
- ▶ Can accommodate flush or surface mount applications
- ▶ For use with Ekho Manual Call Point .



### STX2401-C

Ekho Output Module PSU switch mode power supply has been specifically designed for EN54 compliant fire systems, and is the recommended PSU for use with the Ekho Output Module, EK-WL8-OUT.

The unit is certified to EN54-4:1997, A1:2002 & A2:2006 and features intelligent battery charging technology with mains and battery monitoring, including battery 'deep discharge protection', in the event of a prolonged mains failure.

- ▶ Cost effective switch mode technology
- ▶ 27.6 VDC Output
- ▶ Intelligent battery charging and monitoring
- ▶ Deep Discharge Protection
- ▶ Remote fault signalling
- ▶ LED indication
- ▶ Mains transient protection
- ▶ Certified to EN54-4:1997 + A1:2002 + A2:2006
- ▶ RoHS Compliant.



High Sensitivity  
Smoke Detection

## Air Sampling System

Hochiki's FIRElink range of high sensitivity air sampling equipment consists of detectors and sampling pipe accessories to the very highest levels of sensitivity in environments such as computer areas and clean rooms. In these applications it is able to give warning to the very slightest trace of smoke. All detectors in the FIRElink range have been approved to EN54-20:2006 Classes A, B & C by LPCB.

[www.hochikieurope.com/firelink](http://www.hochikieurope.com/firelink)





### FIRElink-25

A Single Pipe Air Sampling Detector designed to provide very high sensitivity smoke detection. The unit will automatically setup for easy installation and is also designed to fit into a Docking Station which accepts all sampling pipes and cables leaving the detector to be fitted during the final commissioning phase.

- ▶ Approved LPCB
- ▶ High sensitivity provided by laser based forward light scatter for reliable early warning
- ▶ False alarms reduced by unique dust discrimination
- ▶ RS485 communications for networking and remote communications
- ▶ Ultra small, low cost aspirating smoke detector
- ▶ Single sampling pipe up to 50m in length (still air).



### FIRElink-100

A Two Pipe Air Sampling Detector designed to provide very high sensitivity smoke detection. The unit will automatically setup for easy installation and is also designed to fit into a Docking Station which accepts all sampling pipes and cables leaving the detector to be fitted during the final commissioning phase.

- ▶ Approved LPCB
- ▶ High sensitivity provided by laser based forward light scatter for reliable early warning
- ▶ Two sampling pipes up to 100m (aggregate) in length (still air)
- ▶ RS485 communications for networking and remote communications
- ▶ Ultra small, low cost aspirating smoke detector
- ▶ False alarms reduced by unique dust discrimination.



### FIRElink-400

A Four Pipe Air Sampling Detector designed to provide very high sensitivity smoke detection with inherent immunity to dust/dirt build-up. Discriminates between 'dirty' and 'clean' operating periods such as day and night, automatically substituting appropriate system sensitivity without the need for external input or adjustment.

- ▶ Approved LPCB
- ▶ High sensitivity provided by laser based forward light scatter for reliable early warning
- ▶ Four sampling pipes up to 200m (aggregate) in length (still air)
- ▶ RS485 communications for networking and remote communications
- ▶ False alarms reduced by unique dust discrimination.



### FIRElink-400CM

A Four Pipe Air Sampling Detector with integral Command Module designed to provide very high sensitivity smoke detection with inherent immunity to dust/dirt build-up. Added "Command Module" allows the user to control, program and test other FIRElink units on the same "network".

- ▶ Approved LPCB
- ▶ High sensitivity provided by laser based forward light scatter for reliable early warning
- ▶ Four sampling pipes up to 200m (aggregate) in length (still air)
- ▶ RS485 communications for networking and remote communications
- ▶ Command Module allows control over other FIRElink units on network
- ▶ False alarms reduced by unique dust discrimination.



### FL-RC

An Input Relay Card designed to provide detector inputs that may be programmed for Remote Day/Night Mode Changeover, Remote Reset or ClassiFire Override as well as power supply fault monitoring.

- ▶ Relay contacts rated at 0.4 A @24 VDC
- ▶ 4 staged normally open relay outputs for unmonitored connection to other systems
- ▶ Common Fault relay energised normally closed for fail safe operation
- ▶ Only compatible with FIRElink-25 and FIRElink-100.



### FL-APIC

An Addressable Protocol Interface Card used to decode and relay FIRElink detector information directly to an Hochiki ESP compliant Fire Control Panel.

- ▶ Full address range (1 - 127)
- ▶ Compatible with all FIRElink detectors and command modules
- ▶ Supports both single and multi mode operation.



### FIRElink Sampling Pipes

The sampling pipe and connectors are used in conjunction with the FIRElink Range of Air Sampling Detectors. The Pipe-cad software supplied with each FIRElink detector calculates the length of pipe and configuration of sampling holes required for each installation.

Prices and further details provided upon request.



### FIRElink Dust Filters

FL-DF1 Hochiki Dust Filter For FIRElink 400 Series

FL-DF2 Hochiki Dust Filter For FIRElink 25/100 Series

Prices and further details provided upon request.

# ANCILLARY

## Equipment

Hochiki's comprehensive range of ancillary equipment includes products to help make routine maintenance and commissioning of analogue and conventional smoke detectors easier and more reliable. The range includes head removal tools, heat detector tester poles, loop commissioning and emulation equipment and duct smoke detection equipment.





### DH-24

An **Electromagnetic Door Holder** designed to hold open fire doors and is ideally suited for hospitals, schools and other public buildings. In a fire situation the doors can be released automatically via a connection to the fire alarm system or manually by activating the release button.

- ▶ 24 VDC
- ▶ Surface mounted
- ▶ 200 Newton holding force
- ▶ Swivel keeper plate
- ▶ Spring-loaded ejector pin
- ▶ Manual release button.



### SDP-3

A **Duct Probe Housing** allowing a standard photoelectric smoke detection device, either a conventional detector or an analogue sensor, to be mounted on the outside of an air duct for the purpose of monitoring the air within the duct.

- ▶ One-tube air sampling system
- ▶ Test hole on cover
- ▶ Simple installation/maintenance
- ▶ Sensitive flow indication
- ▶ Installer-friendly connection of cables
- ▶ Allows air duct sampling using standard detector or sensor
- ▶ Fits either square or round section ducting (with additional brackets).



### TCH-B200

A **Hand Held Address Programmer** designed to address the ESP range of Sensors and other intelligent devices such as the YBO-BS Base Sounder. Designed to be light, robust and easy to use it operates from a single PP3 size battery which can provide up to 8000 operations.

- ▶ Lightweight design
- ▶ Quick and reliable addressing
- ▶ Up to 8000 address settings from one battery
- ▶ Displays sensor analogue value.

Note: Button colour may vary.



### 1800-101 TT<sup>2</sup>

The **Flame Detector Tester TT<sup>2</sup>** is a test and calibration unit explicitly designed to work with the full range of IFD Flame Detectors.

- ▶ Used to test UV, UV/IR, UV/IR<sup>2</sup>, UV/IR<sup>3</sup> flame detectors, in-situ
- ▶ 8m testing range
- ▶ Can calibrate flame detectors (with kit - sold separately)
- ▶ Integral rechargeable battery



### YBN-UA

A **Recess Mounting Adaptor** for both the ESP and CDX Range of sensors and detectors and their associated mounting bases. Allows a base and head combination to be flush mounted by providing a recess fixing to the ceiling.

(Shown with base fitted – not supplied)

- ▶ Sturdy construction, easy to install
- ▶ Allows base and analogue sensor or conventional detector to be flush mounted
- ▶ Supplied with fixing brackets
- ▶ Colour-matched to existing ivory-coloured sensor/detector ranges
- ▶ Suitable for a maximum ceiling thickness of 30mm.



### YBD-RA

A **Surface Wiring Adaptor** which allows the majority of Hochiki Sensors/ Detectors and their Mounting Bases to be fitted flush against a fixing surface, whilst also allowing surface wiring (without conduit) to be connected.

- ▶ Low profile - only 16mm
- ▶ Compatible with the majority of existing Analogue and Conventional bases
- ▶ Colour matches standard Hochiki Analogue and Conventional sensor/detector/ base ranges.



### SOLO POLES

**Fiberglass Poles** designed to be completely interchangeable with all of the SOLO Tools. Manufactured in a lightweight fibreglass, the poles are completely non-conductive and have been subjected to rigorous conductivity testing to ensure the integrity of the insulating qualities.

- ▶ Lightweight, non conductive
- ▶ Accept all of the SOLO tools
- ▶ Can extend to 9m.



### TESTIFIRE

A fully portable field device for functional testing of fire detectors. The unit is suitable for testing optical/photoelectric and ionisation smoke sensors, thermal sensors (fixed temperature or rate-of-rise), and carbon monoxide (CO) fire sensors, be they conventional, addressable or analogue addressable.

- ▶ Powered by battery batons within pole
- ▶ Simultaneous stimuli (smoke and heat) can cut test times in multi-sensors by up to 66%
- ▶ Heat detector test times reduced through wider range of settings
- ▶ Clearing cycle provides rapid detector reset with no repeat alarm
- ▶ Stimuli capsules for smoke and CO held within unit
- ▶ Faster, more productive testing with just one tool.



### SOLO 200

A Universal Detector Removal Tool suitable for the majority of current Hochiki detectors\*

\*Except those with flying leads, for example the DFG-60E or the ACB-EW.

- ▶ Colour-coded grips twist into place to create different size combinations
- ▶ Universal, counterbalanced joint ensures the tool remains horizontal.



### SOLO 330

A Smoke Detector Tester providing functional testing to introduce (simulated) smoke or CO through the detector vents and into the sensing chamber.

- ▶ Robust, lightweight design
- ▶ Touch sensitive, ideal for suspended ceilings
- ▶ Clear cup allows view of detector LED
- ▶ Spring-loaded dispenser mechanism conserves aerosol
- ▶ Test gas canisters (non CFC) are available containing either simulated smoke (for testing smoke detectors) or CO (for testing CO detectors).



### SOLO 461

A Cordless Heat Detector Tester which utilises Cross Air Technology to ensure the correct temperature is applied to the sensing elements, not the detector plastics.

- ▶ Safe, cable free, battery-powered operation
- ▶ Supplied with 2 Battery Batons™ and a fast charger
- ▶ Intelligent device, only heats when detector present.



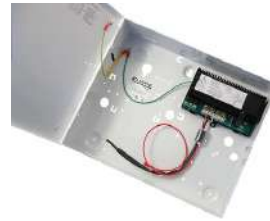
### SOLO 823 KIT

A Universal Set Of Tools for testing and removing smoke and heat detectors up to 9m high.

Contains:

- ▶ 1 x Solo 100 Telescopic Pole
- ▶ 3 x Solo 101 Extension Pole
- ▶ 1 x Solo 200 Universal Detector Removal Tool
- ▶ 1 x Solo 330 Aerosol Smoke Dispenser
- ▶ 1 x Solo 461 Cordless Heat Detector Test Kit (includes 2 Battery Batons™ and Charger)
- ▶ 1 x Solo 610 Protective Carrying Bag.





### HE-PSU(2.5A)

A Stand-Alone Power Supply Unit with integrated charger designed to be used with Hochiki's FIRElink range of air sampling detectors and the CHQ Modules that are non loop-powered (CHQ-DZM, CHQ-DZM(IS) and CHQ-DSC).

- ▶ Enclosure mounted with battery space
- ▶ Fully enclosed and robust construction
- ▶ 110 V or 230 V input
- ▶ Regulated, true 24 V output
- ▶ House up to 26 Ah batteries
- ▶ Status indicators for monitored faults
- ▶ Intelligent battery charging and temperature compensation
- ▶ Dual output for powering fire alarm control panels remotely.

### HE-PSU(5.25A)

A Stand-Alone Power Supply Unit with integrated charger designed to be used with Hochiki's FIRElink range of air sampling detectors and the CHQ Modules that are non loop-powered (CHQ-DZM, CHQ-DZM(IS) and CHQ-DSC2).

- ▶ Enclosure mounted with battery space
- ▶ 110 V or 230 V input
- ▶ Regulated, true 24 V output
- ▶ House up to 26 Ah batteries
- ▶ Status indicators for monitored faults
- ▶ Fully enclosed and robust construction
- ▶ Dual output for powering fire alarm control panels remotely
- ▶ Intelligent battery charging and temperature compensation.

### STX2401-C

The STX2401-C switch power mode supply has been specifically designed for EN54 compliant fire systems, and is the recommended PSU for use with the Ekho Output Module, EK-WL8-OUT.

The unit is certified to EN54-4:1997, A1:2002 & A2:2006 and features intelligent battery charging technology with mains and battery monitoring, including battery 'deep discharge protection', in the event of a prolonged mains failure.

The unit features independent volt-free outputs and the integral LED indicators provide quick diagnostics of the status of the power supply.

- ▶ Cost effective switch mode technology
- ▶ 27.6 VDC Output
- ▶ Intelligent battery charging and monitoring
- ▶ Deep Discharge Protection
- ▶ Remote fault signalling
- ▶ LED indication
- ▶ Mains transient protection
- ▶ Certified to EN54-4:1997 + A1:2002 + A2:2006
- ▶ RoHS Compliant



### SMB-1

An IP66 Rated, Grey (RAL7035) Enclosure designed for use with the Hochiki range of Modules. Supplied with a transparent black lid as standard. Used in conjunction with the SMB-ADAPTOR this enclosure can house any of the PCB assemblies from the Hochiki Smart-Fix Module range.

- ▶ 32 knock-outs
- ▶ Grey lid available SMB-1(LID)
- ▶ Quick-release screws Polyurethane gasket provides IP66 protection
- ▶ Temperature resistance to +70°C, Impact resistant, and Non-flammable
- ▶ Corrosion free, resistant to most alkaline and acid.



### SMB-2

An IP66 Rated, Grey (RAL7035) Enclosure designed for use with the Hochiki range of DIN Modules. Supplied with a transparent black lid as standard. The unit is supplied with a DIN Rail section (plus fixings) and will accept up to six Hochiki DIN Rail Modules, side-by-side.

- ▶ Quick-release screws
- ▶ Polyurethane gasket provides IP66 protection
- ▶ 32 knock-outs
- ▶ Supplied with DIN Rail and fixings
- ▶ Grey lid available SMB-2(LID)
- ▶ Temperature resistance to +70°C, Impact resistant, and Non-flammable
- ▶ Corrosion free, resistant to most alkaline and acid
- ▶ Designed to house up to 6 Hochiki DIN Modules.



### SMB-3

A Grey (RAL7035) Enclosure Designed for use with the Hochiki range of DIN Modules. Supplied with a transparent black lid as standard. The unit is supplied with a DIN Rail section (plus fixings) and will accept up to four Hochiki DIN Rail Modules, side-by-side.

- ▶ 20 knock-outs
- ▶ Quick-release screws
- ▶ Polyurethane gasket provides IP66 protection
- ▶ Supplied with DIN Rail and fixings
- ▶ Grey lid available SMB-3(LID)
- ▶ Temperature resistance to +70°C, Impact resistant, and Non-flammable
- ▶ Corrosion free, resistant to most alkaline and acid
- ▶ Designed to house up to 4 Hochiki DIN Modules.



### PL-3

Additional Programming Lead 3 Way Connection for use on Hochiki devices that feature the square programming terminal, HCP-E(SCI) call points for example. The jack plug fits into the socket on the TCH-B200 programmer and the square programming plug fits to the device.

- ▶ Allows connection of TCH-B200 programmer
- ▶ For use with Hochiki devices with square connector.



### REMOVAL TOOL-3

Outer Cover Removal Tool allows the case of any photoelectric sensor or detector to be removed easily, even if the locking tabs have been employed. This allows easy access to the photoelectric chamber for maintenance or replacement. Fits ALN-EN, ACC-EN and ATJ-EN only.



### CHQ-BACKBOX

The **Module Backbox** is designed for installations where the CHQ Range of Modules - CHQ-DIM(SCI), CHQ-SZM(SCI), CHQ-DZM(SCI), CHQ-DSC(SCI), CHQ-MRC(SCI), CHQ-DRC(SCI) & CHQ-PCM require mounting within a glanded enclosure. The unit features ten knock-outs suitable for cable glands (not supplied) and accepts the CHQ Modules directly as a lid.

- ▶ Provides glanded cable connections
- ▶ Compatible with all CHQ Modules
- ▶ Robust design.



### CHQ-ADAPTOR

**Adaptor for the New CHQ Modules** designed to allow the "Smart-Fix" range of CHQ Modules to be housed in existing enclosures originally designed for the first generation CHQ-OEM Modules by modifying the 'footprint' of the unit.

- ▶ Footprint matches older enclosure sizes
- ▶ Allows the PCB component of a CHQ Module to be housed in an enclosure.



### MBB-2

A **Marine Back Box** providing a splash proof and secure fixing for the Hochiki ESP and CDX Marine Approved Range of Sensors and Detectors and their associated Bases. Provides an aesthetically pleasing solution where surface fixed devices are required. The housing supports four 20mm glanded entries for cabling access.

- ▶ 4 Glanded cable entry holes (glands not supplied)
- ▶ Colour matched
- ▶ Approved Sensor and Base range
- ▶ Provides moisture and dust resistant fixing
- ▶ Ideal for bulk-head fixing
- ▶ Approved to MED by GL
- ▶ GL Type approval
- ▶ Non-marine use version available (SBB-2).



### SI-CAP2

A **Protective Cap** which can be fitted to the YBO-R/SCI isolator base range, the YBO-BS base sounder or the YBO-BSB base sounder beacon when either of these devices isn't fitted with a sensor. It can also fit the YBN-R/3 and the YBN-R/3(SCI).

- ▶ Easy to Fit (Twist-fit)
- ▶ Protects Wiring Terminals on Isolator Bases and Base Sounders.

# A Guide To Our Sounder/ Beacon Variants



## YBO-BSB2

An Addressable Loop-Powered Base Sounder Beacon

Product Type	Product Code	LED Colour	Case	Rating
Base Sounder Beacon	YBO-BSB2/WL	White	Ivory	'0'
Base Sounder Beacon	YBO-BSB2/RL	Red	Ivory	'0'
Base Sounder Beacon	YBO-BSB2(WHT)/WL	White	White	'0'
Base Sounder Beacon	YBO-BSB2(WHT)/RL	Red	White	'0'

Example product code

**CHQ-WSB2(WHT)/RL**

WHT = White Case

RED = Red Case

RL = RED LEDs

WL = WHITE LEDs



## CHQ-WSB2

An Addressable Loop-Powered Wall Sounder Beacon

Product Type	Product Code	LED Colour	Case	Rating
Wall Sounder Beacon	CHQ-WSB2/WL	White	Red	'0'
Wall Sounder Beacon	CHQ-WSB2/RL	Red	Red	'0'
Wall Sounder Beacon	CHQ-WSB2(WHT)/WL	White	White	'0'
Wall Sounder Beacon	CHQ-WSB2(WHT)/RL	Red	White	'0'

# A Guide To Our Conventional Beacon Variants

Example product code

**CWST-WR-S5**

R = Red Case    R = Red LEDs    S = Standard Base

W = White Case    W = White LEDs    W = Weatherproof Base



**CWST-S5**  
A Conventional Beacon



**CWST-W5**  
A Conventional Weatherproof Beacon

Product Type	Product Code	Led Colour	Case Colour	EN54-23 Ratings			
				Wall Fitted	Ceiling Fitted		
Conventional Beacon	CWST-RR-W5	Red	Red	W-2.4-6.2	C-3-9.4	C-6-8.6	-
Conventional Beacon	CWST-RR-S5	Red	Red	W-2.4-6.2	C-3-9.4	C-6-8.6	-
Conventional Beacon	CWST-RW-S5	White	Red	W-2.4-9.0	C-3-9.5	C-6-9.5	C-9-9.5
Conventional Beacon	CWST-RW-W5	White	Red	W-2.4-9.0	C-3-9.5	C-6-9.5	C-9-9.5
Conventional Beacon	CWST-WR-S5	Red	White	W-2.4-6.2	C-3-9.4	C-6-8.6	-
Conventional Beacon	CWST-WR-W5	Red	White	W-2.4-6.2	C-3-9.4	C-6-8.6	-
Conventional Beacon	CWST-WW-W5	White	White	W-2.4-9.0	C-3-9.5	C-6-9.5	C-9-9.5
Conventional Beacon	CWST-WW-S5	White	White	W-2.4-9.0	C-3-9.5	C-6-9.5	C-9-9.5

# A Guide To Our Ceiling Beacon Variants

Example product code

**CHQ-CB(WHT)/WL**

WHT = White Case

RED = Red Case

WL = White LEDs

RL = Red LEDs



**CHQ-CB**

An Addressable Loop-Powered Ceiling Beacon

Product Type	Product Code	LED Colour	Case Colour	EN54-23 Ratings		
				0	1*	2
Ceiling Beacon	CHQ-CB/WL	White	Ivory	C-3-5	C-3-7.5	C-3-10
Ceiling Beacon	CHQ-CB/WL-15	White	Ivory	0	C-3-10	C-3-15
Ceiling Beacon	CHQ-CB/RL	Red	Ivory	0	C-3-7.5	C-3-10
Ceiling Beacon	CHQ-CB (WHT)/WL	White	White	C-3-5	C-3-7.5	C-3-10
Ceiling Beacon	CHQ-CB (WHT)/WL-15	White	White	0	C-3-10	C-3-15
Ceiling Beacon	CHQ-CB (WHT)/RL	Red	White	0	C-3-7.5	C-3-10
Ceiling Beacon	CHQ-CB (RED)/WL	White	Red	C-3-5	C-3-7.5	C-3-10
Ceiling Beacon	CHQ-CB (RED)/WL-15	White	Red	0	C-3-10	C-3-15
Ceiling Beacon	CHQ-CB (WHT)/RL	Red	White	0	C-3-7.5	C-3-10

\*Current default setting = light output level one. Check panel compatibility for EN54-23 Ratings.

# A Guide To Our Wall Beacon Variants

Example product code

**CHQ-WB(WHT)/WL**

WHT = White Case

RED = Red Case

WL = White LEDs

RL = Red LEDs



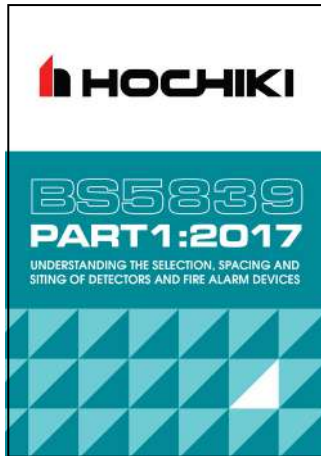
**CHQ-WB**

An Addressable Loop-Powered Wall Beacon

Product Type	Product Code	LED Colour	Case Colour	EN54-23 Ratings		
				0	1*	2
Wall Beacon	CHQ-WB/WL	White	Ivory	W-3-5	W-3-7.5	W-3-10
Wall Beacon	CHQ-WB/RL	Red	Ivory	W-3-5	W-3-7.5	W-3-10
Wall Beacon	CHQ-WB(WHT)/WL	White	White	W-3-5	W-3-7.5	W-3-10
Wall Beacon	CHQ-WB(WHT)/RL	Red	White	0	W-3-10	W-3-15
Wall Beacon	CHQ-WB(RED)/WL	White	Red	0	W-3-10	W-3-15
Wall Beacon	CHQ-WB(RED)/RL	Red	Red	0	W-3-10	W-3-15

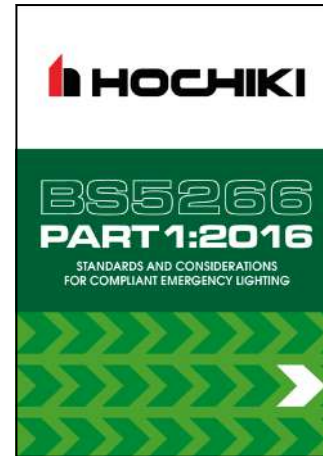
\*Current default setting = light output level one. Check panel compatibility for EN54-23 Ratings.

## Guides from Hochiki



### **BS5839 Part 1:2017 Guide**

Hochiki's BS 5839 Part 1:2017 pocket guide is designed to provide essential information for the selection, spacing and siting of fire detectors.



### **BS5266 Part 1:2016 Guide**

Hochiki's BS 5266 Part 1: 2016 pocket guide is designed to provide essential information for the design, installation and wiring of emergency lighting products.



## Other Product Range Catalogues from Hochiki



### Specialist Product Catalogue

Our Specialist Product Catalogue details the range of specialist fire detection products certified for use in Marine, SIL, Intrinsically Safe and Railway applications.

[www.hochikieurope.com/category/specialist-fire-detection](http://www.hochikieurope.com/category/specialist-fire-detection)

**Notes:**

.....

.....

.....

.....

.....

.....

.....

.....

.....

.....

.....

.....

.....

.....

.....

.....

.....

.....

.....

.....

.....

# Index

10-2210 WSR-S	32	EK-BBOX-1	32	PS200	15
16091	19, 38	EK-BOX-2	32	REMOVAL TOOL-3	42
16591	19	EK-WL8-CP	31	SDP-3	38
1800-101 TT2	19, 38	EK-WL8-EXP	29	SI-CAP2	43
ACB-EW	9	EK-WL8-H	30	SMB-1	41
ACC-EN	7	EK-WL8-IN	31	SMB-2	42
ACC-EN(SCI)	8	EK-WL8-O	30	SMB-3	42
ACD-EN	7	EK-WL8-OH	30	SOC-E3N	17
ALN-EN	7	EK-WL8-OUT	31	SOLO 200	40
ALN-EN(SCI)	8	EK-WL8-OV	30	SOLO 330	40
ATJ-EN	7	EK-WL8-RI	32	SOLO 461	40
ATJ-EN(SCI)	8	EK-WL8-SK	32	SOLO 823 KIT	41
CCP-E	24	EK-WL8-SND	31	SOLO POLES	39
CCP-KS	25	EK-WL8-TRH	29	SPC-ET	19
CCP-SAVWIRE	24	DCD-AE3	17	SR BACKBOX	15
CCP-W	24	DCD-CE3	17	STI-1311 OFR-BREAK	33
CHQ-AB	12	DFJ-AE3	17	STX 2401-C	33
CHQ-ADAPTER	43	DFJ-CE3	18	TCH-B200	15, 38
CHQ-ARI	11	DH-24	38	TESTIFIRE	39
CHQ-BACKBOX	43	DRD-E	18	YBD-RA	39
CHQ-CB	11, 46	FIRElink-25	35	YBN-R/3	9
CHQ-DIM2(SCI)	13	FIRElink-100	35	YBN-R/6	19
CHQ-DRC2(SCI)	13	FIRElink-400	35	YBN-R/6SK	21
CHQ-DSC2(SCI)	14	FIRElink-400CM	35	YBN-UA	39
CHQ-DZM(SCI)	14	FIRElink Dust Filters	36	YBO-BS	10
CHQ-MRC2	13	FIRElink Sampling Pipes	36	YBO-BSB2	11, 44
CHQ-PCM(SCI)	13	FL-APIC	36	YBO-R/3	10
CHQ-POM	12	HCP-E(SCI)	14	YBO-R/6PA	20
CHQ-SIM	12	HCP-W(SCI)	15	YBO-R/6R	20
CHQ-SOM	12	HE-PSU(2.5A)	41	YBO-R/6RN	20
CHQ-SZM2(SCI)	14	HE-PSU(5.25A)	41	YBO-R/6RS	20
CHQ-WB	11, 47	IDENTIFIRE AR	23	YBV-R/4	8
CHQ-WPK	10	IDENTIFIRE RL	22		
CHQ-WS2	9	IDENTIFIRE VID	22		
CHQ-WSB2	10, 44	IDENTIFIRE TS	22		
CLAMBELL	24	IDENTIFIRE TSB	22		
CLB-E	23	IFD-E	18		
CSBB-E	21	LDM-519-DDL	27		
CSB-E	21	LDM-519-LP	27		
CWSB-E	21	LHDC ANALOGUE CABLE	27		
CWST-S5	23, 45	LHDC DIGITAL CABLE	27		
CWST-W5	23, 45	MBB-2	43		
DFG-60BLKJ	18	PL-3	42		



## HOCHIKI EUROPE (UK) LIMITED

Grosvenor Road, Gillingham Business Park,  
Gillingham, Kent, ME8 0SA, United Kingdom  
Telephone: +44 (0)1634 260133  
info@hochikieurope.com  
www.hochikieurope.com

9-5-0-321/ISS31/SEP24



Quality Certificate No.164QMS  
Assessed to ISO 9001  
Environmental Certificate No.164EMS  
Assessed to ISO 14001



Your Safety  Our Technology

